

AGA KHAN UNIVERSITY EXAMINATION BOARD

SECONDARY SCHOOL CERTIFICATE

CLASS IX EXAMINATION

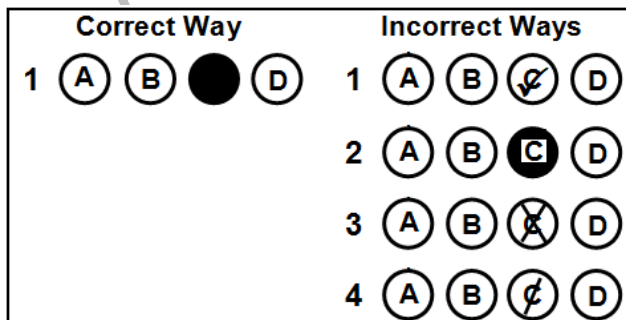
APRIL/ MAY 2017

Computer Science Paper I

Time: 35 minutes Marks: 25

INSTRUCTIONS

1. Read each question carefully.
2. Answer the questions on the separate answer sheet provided. DO NOT write your answers on the question paper.
3. There are 100 answer numbers on the answer sheet. Use answer numbers 1 to 25 only.
4. In each question there are four choices A, B, C, D. Choose ONE. On the answer grid black out the circle for your choice with a pencil as shown below.



Candidate's Signature

5. If you want to change your answer, ERASE the first answer completely with a rubber, before blacking out a new circle.
6. DO NOT write anything in the answer grid. The computer only records what is in the circles.

1. Fourth generation of computers started with the invention of
 - A. vacuum tubes.
 - B. microprocessor.
 - C. integrated circuits.
 - D. artificial intelligence.

2. A programming language that is easy for humans to understand is called
 - A. machine language.
 - B. assembly language.
 - C. low level language.
 - D. high level language.

3. Which of the following components of processor will perform the operation $5 + 10$?
 - A. Input unit
 - B. Control unit (CU)
 - C. Memory unit (MU)
 - D. Arithmetic logic unit (ALU)

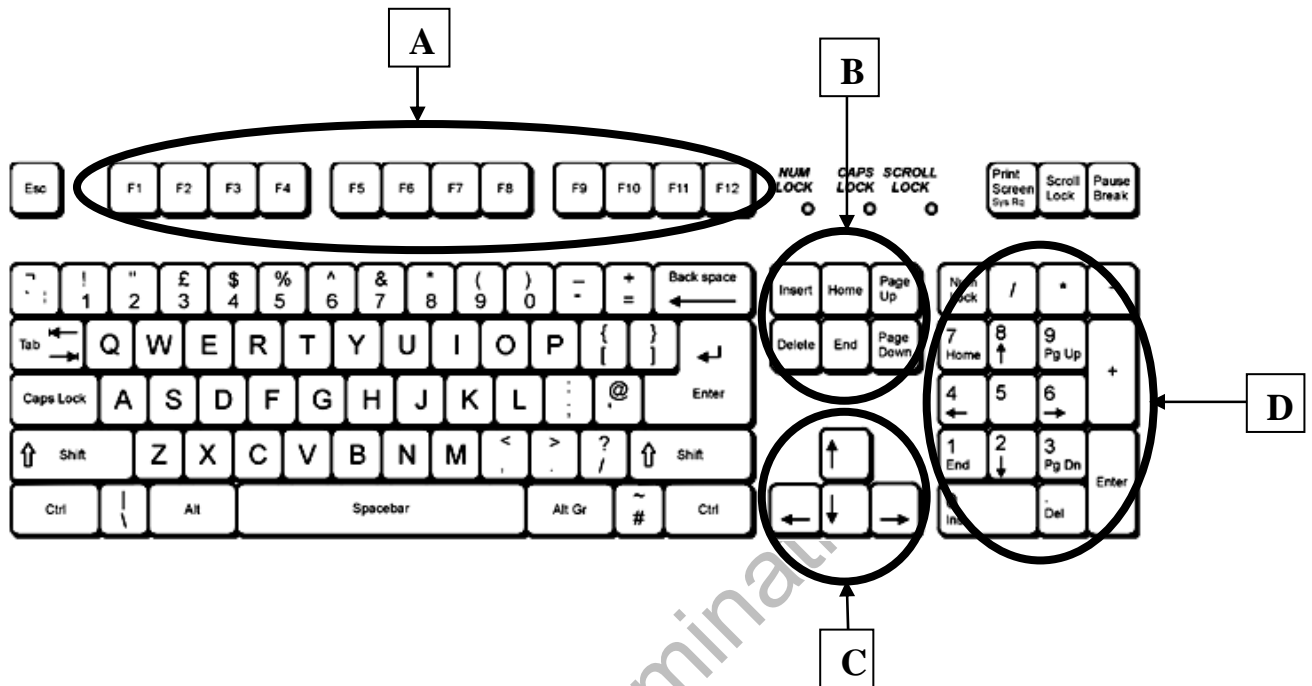
4. When compared with Static RAM (SRAM), which of the following is TRUE about Dynamic RAM (DRAM)?
 - A. DRAM is faster than SRAM.
 - B. DRAM is expensive than SRAM.
 - C. DRAM is a type of non-volatile memory.
 - D. DRAM needs to be refreshed periodically.

5. Which of the following is TRUE about serial ports?
 - A. They transmit one bit at a time.
 - B. They are faster than parallel ports.
 - C. They are also called line printer (LPT) ports.
 - D. They are largest ports on the rear of computer system.

6. Which of the following provides connectivity between central processing unit (CPU) and memory ONLY?
 - A. Serial port.
 - B. Control bus.
 - C. Parallel port.
 - D. Address bus.

7. The keys on a computer keyboard are divided into five groups.

Which of the key groups encircled below is the 'Function key group' on a standard keyboard?



8. Which of the following devices is suitable for producing large drawings or images such as plans of buildings or blue prints of complex machines like an aircraft?

- A. Dot matrix printer
- B. Inkjet printer
- C. Laser printer
- D. Plotter

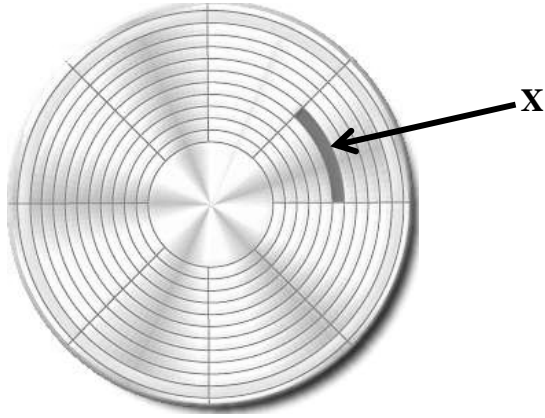
9. Each alphabet, symbol or number on a standard keyboard can be represented by an ASCII number. One ASCII number occupies one byte of memory.

How many bits are required to store the word **STAR** in computer memory?

- A. 4
- B. 8
- C. 16
- D. 32

10. The data storage part of a hard disk consists of metallic circular platters.

Consider the image of a hard disk platter.



The portion of hard disk platter shaded and marked with **X** is known as

- A. track.
 - B. sector.
 - C. read/ write head.
 - D. hard disk controller.
11. Binary, decimal, octal and hexadecimal are the number systems widely used in the field of computer science.
- The number $(112)_8$ is an example of
- A. octal number system.
 - B. binary number system.
 - C. decimal number system.
 - D. hexadecimal number system.
12. If the decimal number 167 is stored in computer memory, then what is the binary equivalent of this decimal number?
- A. $(11100101)_2$
 - B. $(10100111)_2$
 - C. $(11101101)_2$
 - D. $(10110111)_2$
13. The hexadecimal digit C is equal to decimal number
- A. 10
 - B. 11
 - C. 12
 - D. 13

14. How many binary digits (bits) are required to represent hexadecimal number **ABC**?

- A. 3
- B. 6
- C. 12
- D. 24

15. Shanaya is an Associate Director in an organisation. She has to give a presentation in a meeting. The presentation includes text, graphics, animation and a movie clip.

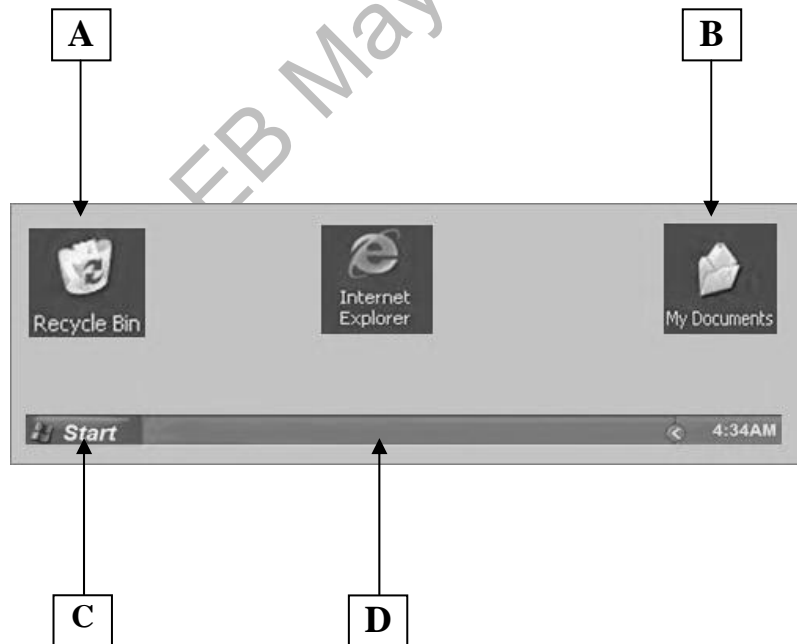
The most suitable software for Shanaya to give presentation is

- A. MS Excel.
- B. MS Word.
- C. MS Access.
- D. MS PowerPoint.

16. Aryan is working on MS Word file and he wants to know the total number of pages in the file. The bar that will help him for this purpose is

- A. status bar.
- B. menu bar.
- C. tool bar.
- D. title bar.

17. If any file/ folder is minimised in Windows, then which of the following would be the best option to find the minimised file/ folder instantly?



18. Akram has deleted a PowerPoint presentation file accidentally.

He can restore the deleted file from

- A. Recycle Bin.
- B. Control Panel.
- C. My Computer.
- D. My Documents.

19. Which of the following print layouts are used to print text on a horizontal page?

- A. Landscape
- B. Portrait
- C. Normal
- D. Legal

20. You can run a slideshow in PowerPoint using

- A. F5
- B. F6
- C. F7
- D. ESC

21. Which of the following is an example of an operating system?

- A. Microsoft Office
- B. Microsoft Word
- C. Microsoft Excel
- D. Microsoft Windows

22. GUI stands for

- A. Geographical User Interface
- B. Giga Byte User Interface
- C. Graphical User Interface
- D. Graphical User Interrupt

23. There are internal and external commands in disk operating system (DOS).

Which of the following is an external DOS command?

- A. DIR
- B. DEL
- C. EXIT
- D. DELTREE

24. Kazim is using disk operating system (DOS). He wants to delete all the files in the current directory.

The DOS command he should use for this purpose is

- A. DEL
 - B. DEL *.*
 - C. DELTREE
 - D. DELFILES *.*
25. Which of the following is an example of application software?
- A. MS Word
 - B. Anti-virus
 - C. Screen saver
 - D. MS Windows

AKU-EB May Examination 2017

Please use this page for rough work

AKU-EB May Examination 2017